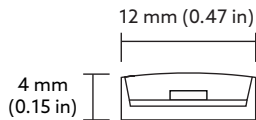


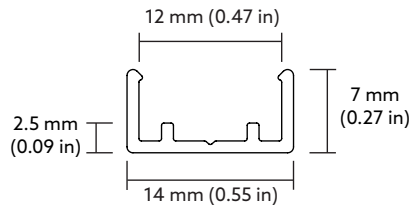


- Product installation must be carried out by a qualified professional.
- Before installing make sure, that electrical power is turned **OFF**.
- Pay attention to polarity when connecting (installing) the product.
- LED strips (and power supplies) may only be installed in accordance with all applicable regulations and standards.
- LED strips and their components should not be subjected to any form of mechanical stress.
- Do not operate if the product has been damaged.
- Installation/handling/sealing operation temperature shall be between +18°C to +35°C (64,4°F to 95°F) ambient temperature.
- To protect the surface from dirt and fingerprints, we recommend the use of protective gloves during installation.
- Product warranty does not cover any damage caused by faulty installation and/or misuse.
- For further information, please contact the manufacturer.

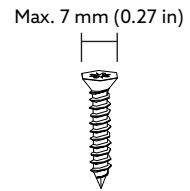
DIMENSIONS



LED strip

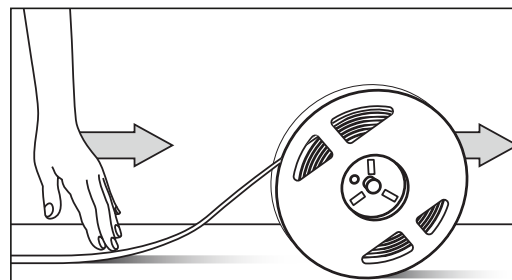
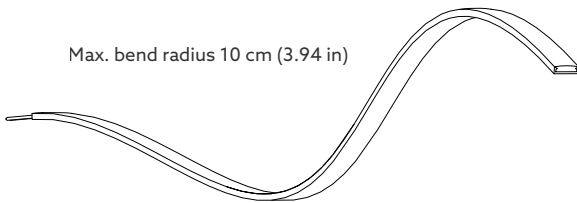


Polycarbonate mounting profile

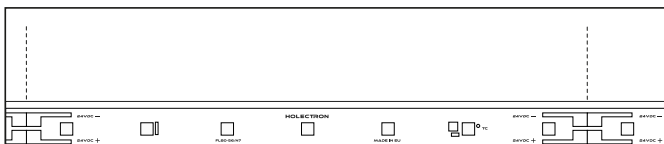


Screws

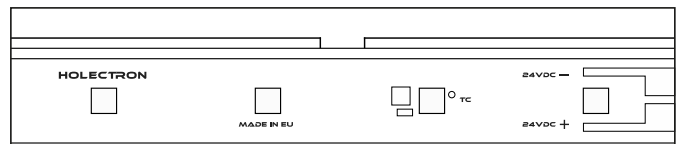
Max. bend radius 10 cm (3.94 in)



LED strips may only be turned on when rolled out.
Keep the LED strip on the reel while applying it onto the mounting profile.

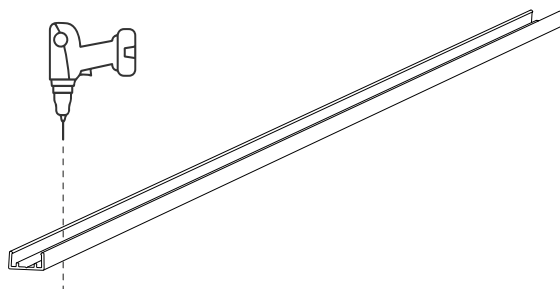


Aqua can be cut with a pair of scissors at the designated cutting point between the steps.

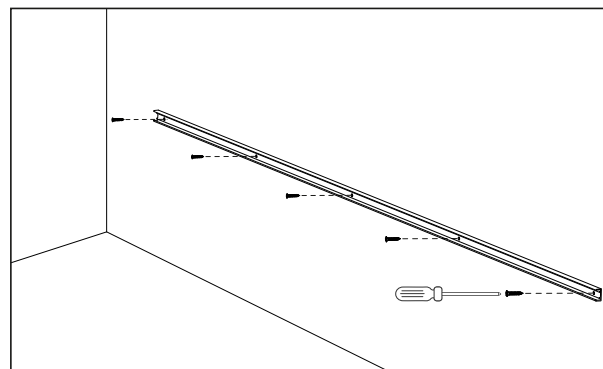


To account for possible expansion/contraction due to temperature changes, leave a 2 mm (0.07 in) gap between the mounting profiles.

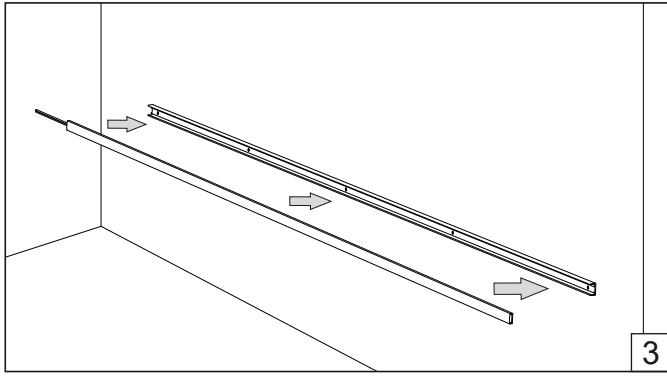
PROFILE MOUNTING



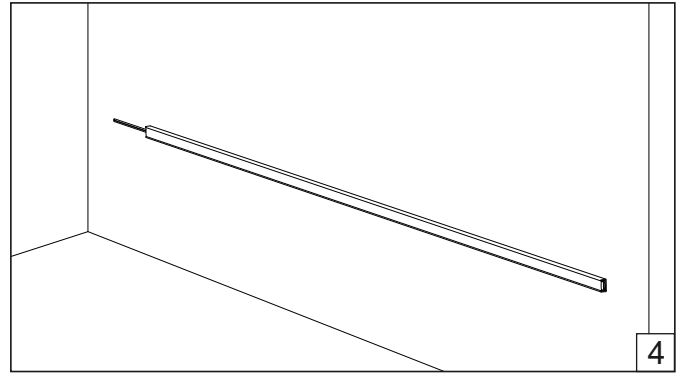
1



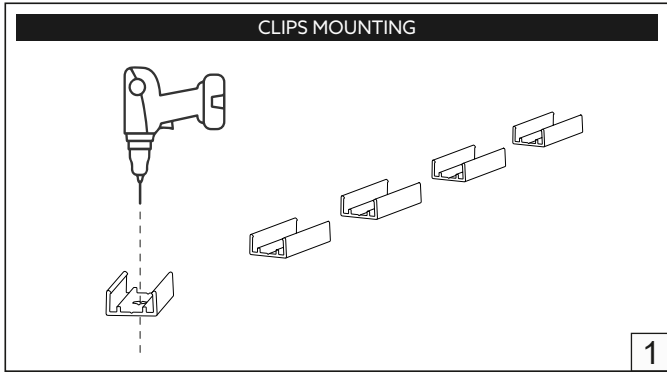
2



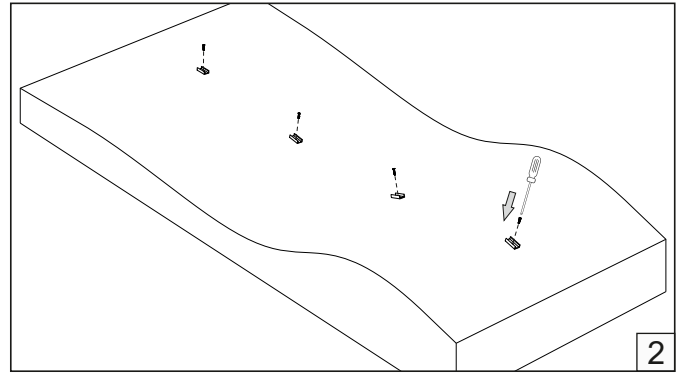
3



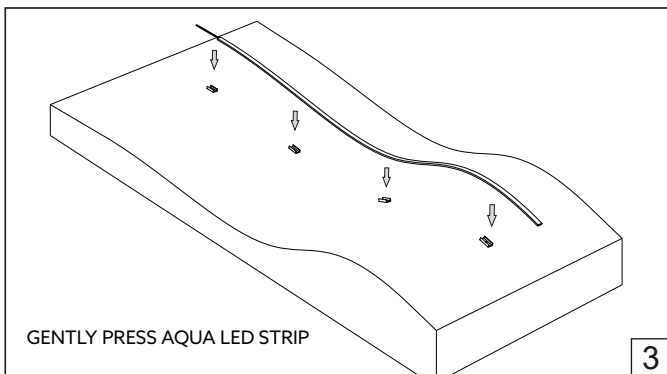
4



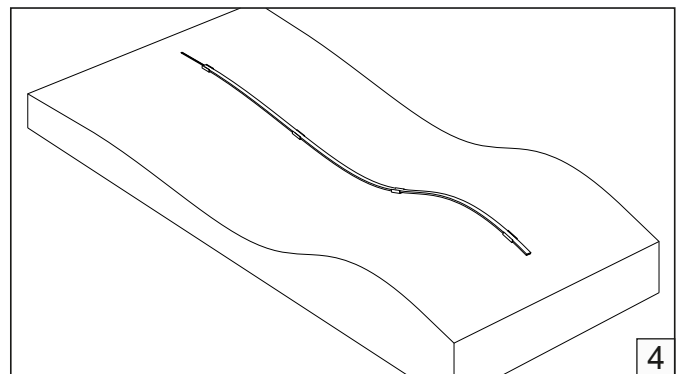
1



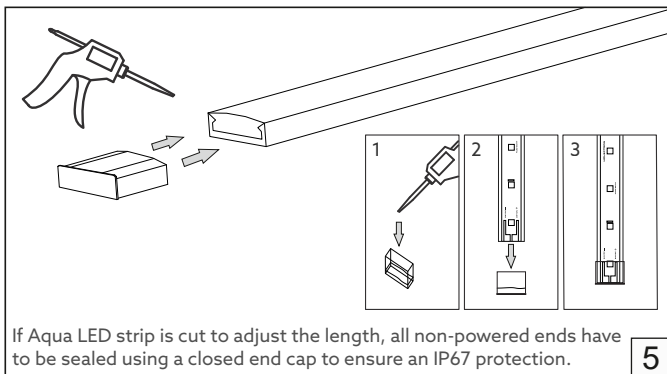
2



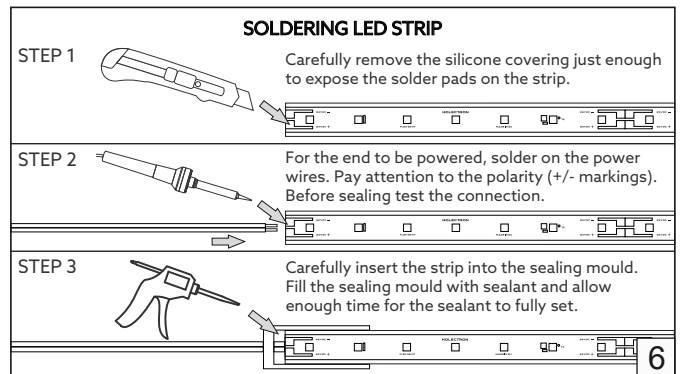
3



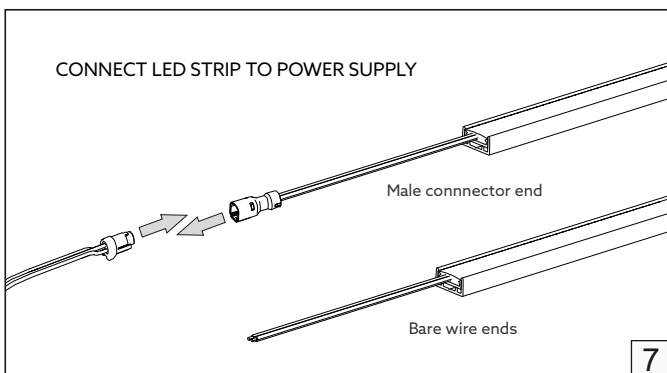
4



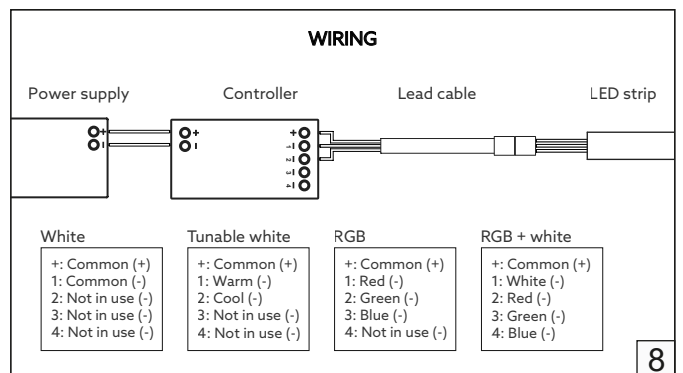
5



6



7



8